

Del Norte County Telephony Equipment and Locations

Data last updated: May 12, 2007

Table of Contents

Area Codes Map	2
Verizon.....	3
Others	6
Tandem CLLI for CRCYCAXF03T	7
Switch Information By Location	8
Crescent City - CRCYCAXFDS1	8
Gasquet - GSQTCAXFRS2	9
Hiouchi - HICHCAXFRS2	10
Klamath - KLMTCAEFRS1.....	11
Smith River - SMRVCAXFDS1.....	12
Orick - ORICCAXFRS1	13
CELLCO PARTNERSHIP DBA VERIZON WIRELESS – CA (Verizon Wireless)	14
Edge Wireless	15
Common Language Location Information (CLLI) Codes Technical Description.....	17

NOTE: Information in this document may not be accurate. The source is Telcodata.us. Addresses of switches were verified by visits to the site location. We did not have the opportunity to enter the facilities. The GPS locates provided in this data were used to plot switch locations for the maps in the Assessment document.

Area Codes Map



http://www.nanpa.com/area_code_maps/display.html?ca, retrieved May 12, 2007

Verizon

npa-nxx	State	Company	OCN	Ratecenter	CLLI	Assign Date	Misc
707-457	CA	VERIZON WEST COAST INC.-CA	2344	CRESCENTCY	GSQTCAXFRS2	00/00/0000	Prefix Type: ICO Switch Name: GASQUET Switch Type: NTDMSRSE LATA: San Francisco CA (722) Tandem: CRCYCAXF03T Detailed Switch Info
707-458	CA	VERIZON WEST COAST INC.-CA	2344	CRESCENTCY	HICHCAEFRS2	00/00/0000	Prefix Type: ICO Switch Name: HIOUCHI Switch Type: NTDMSRSE LATA: San Francisco CA (722) Tandem: CRCYCAXF03T Detailed Switch Info
707-464	CA	VERIZON WEST COAST INC.-CA	2344	CRESCENTCY	CRCYCAXFDS1	00/00/0000	Prefix Type: ICO Switch Name: CRESCENT CITY Switch Type: GTD5EAX LATA: San Francisco CA (722) Tandem: CRCYCAXF03T Detailed Switch Info

npa-nxx	State	Company	OCN	Ratecenter	CLLI	Assign Date	Misc
707-465	CA	VERIZON WEST COAST INC.-CA	2344	CRESCENTCY	CRCYCAXFDS1	00/00/0000	Prefix Type: ICO Switch Name: CRESCENT CITY Switch Type: GTD5EAX LATA: San Francisco CA (722) Tandem: CRCYCAXF03T Detailed Switch Info
707-482	CA	VERIZON WEST COAST INC.-CA	2344	KLAMATH	KLMTCAFRS1	00/00/0000	Prefix Type: ICO Switch Name: KLAMATH Switch Type: NTDMSRSE LATA: San Francisco CA (722) Tandem: CRCYCAXF03T Detailed Switch Info
707-487	CA	VERIZON WEST COAST INC.-CA	2344	SMITHRIVER	SMRVCAFXDS1	00/00/0000	Prefix Type: ICO Switch Name: SMITH RIVER Switch Type: NTDMS10 LATA: San Francisco CA (722) Tandem: CRCYCAXF03T Detailed Switch Info

npa-nxx	State	Company	OCN	Ratecenter	CLLI	Assign Date	Misc
707-488	CA	VERIZON WEST COAST INC.-CA	2344	ORICK	ORICCAXFRS1	00/00/0000	Prefix Type: ICO Switch Name: ORICK Switch Type: NTDMSRSE LATA: San Francisco CA (722) Tandem: CRCYCAXF03T Detailed Switch Info

Others

npa-nxx	State	Company	OCN	Ratecenter	CLLI	Assign Date	Misc
707-218	CA	EDGE WIRELESS, LLC	3874	CRESCENTCY	EURKCAEU0MD	10/18/2001	Prefix Type: PCS Switch Name: Switch Type: LATA: San Francisco CA (722) Tandem: Detailed Switch Info
707-460	CA	UNITED STATES CELLULAR CORP. - CALIFORNIA	6261	CRESCENTCY	CRCYCAA01MD	00/00/0000	Prefix Type: WIRELESS Switch Name: Switch Type: LATA: San Francisco CA (722) Tandem: Detailed Switch Info

<http://www.telcodata.us/telcodata/company?company=VERIZON+WEST+COAST+INC.-CA&state=CA> and
<http://www.telcodata.us/telcodata/ratecenter?ratecenter=CRESCENTCY&state=CA>, retrieved April 13, 2007

Tandem CLLI for CRCYCAXF03T

These are the telephony switches for Del Norte County.

Company	OCN	Switch	English Name	Switchtype
VERIZON WEST COAST INC.-CA	2344	GSQTCAXFRS2	GASQUET	NTDMSRSE
VERIZON WEST COAST INC.-CA	2344	HICHCAXFRS2	HIOUCHI	NTDMSRSE
VERIZON WEST COAST INC.-CA	2344	CRCYCAXFDS1	CRESCENT CITY	GTD5EAX
VERIZON WEST COAST INC.-CA	2344	KLMTCAAXFRS1	KLAMATH	NTDMSRSE
VERIZON WEST COAST INC.-CA	2344	SMRVCAXFDS1	SMITH RIVER	NTDMS10
VERIZON WEST COAST INC.-CA	2344	ORICCAAXFRS1	ORICK	NTDMSRSE

<http://www.telcodata.us/tandem.html?clli=CRCYCAXF03T&results=1>, retrieved April 12, 2007

A **Class 4** or **Tandem** switch is a U.S. telephone company (telco) central office telephone exchange used for long distance communications in the Public Switched Telephone Network (PSTN) to interconnect telephone company offices. In contrast, a Class 5 switch or end-office is primarily used to terminate local calls, in other words connect to the customer (also known as the subscriber). A tandem being a telephone switch to which no telephones are wired, its services were termed non-customer facing. Other terms are Toll Centers (TC), if operators are present, otherwise they are Toll Points (TP). Class 4 switches at that time often had an associated Traffic Service Position System (TSPS) to handle operator calls. After the Bell System Divestiture the class was called Access Tandems (AT).

http://en.wikipedia.org/wiki/Class_4_telephone_switch, retrieved April 12, 2007

Switch Information By Location

Crescent City - CRCYCAXFDS1

State: CA
English Name: CRESCENT CITY
CLLI: CRCYCAXFDS1
Switch Type: GTD5EAX
Host CLLI (if remote):
Status: ()
LATA: San Francisco CA (722)
Exchanges Served: 2
Building CLLI: CRCYCAXF
Street Address: 356 H St
Crescent City, CA 95531-4018

Map



Lat/Long: 41.75242, -124.19826
V/H: 7647, 9096
Tandem: [CRCYCAXF03T](#)
SS7 Point Code:
List of served exchanges: 707-464 707-465
List of served ratecenters: CRESCENTCY,CA
List of carriers on switch: VERIZON WEST COAST INC.-CA (2344)
List of other switches in building: [CRCYCAXFDS1](#)

Gasquet - GSQTCAXFRS2

State: CA
English Name: GASQUET
CLLI: GSQTCAXFRS2
Switch Type: NTDMSRSE
Host CLLI (if remote):
Status: ()
LATA: San Francisco CA (722)
Exchanges Served: 1
Building CLLI: GSQTCAXF
Street Address: 10250 STHWY 199
GASQUET, CA 95543

Map

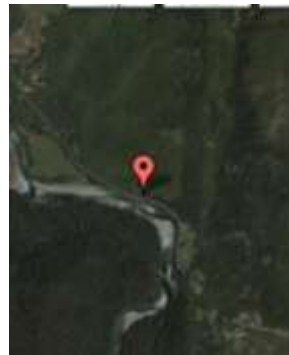


Lat/Long: 41.84406, -123.96928
V/H: 7624, 9060
Tandem: [CRCYCAXF03T](#)
SS7 Point Code:
List of served exchanges: 707-457
List of served ratecenters: CRESCENTCY,CA
List of carriers on switch: VERIZON WEST COAST INC.-CA (2344)
List of other switches in building: [GSQTCAXFRS2](#)

Hiouchi - HICHCAXFRS2

State: CA
English Name: HIOUCHI
CLLI: HICHCAXFRS2
Switch Type: NTDMSRSE
Host CLLI (if remote):
Status: ()
LATA: San Francisco CA (722)
Exchanges Served: 1
Building CLLI: HICHCAXF
Street Address: 5700 N Bank Rd
Crescent City, CA 95531-9585

Map



Lat/Long: 41.81502, -124.08585
V/H: 7632, 9077
Tandem: [CRCYAXF03T](#)
SS7 Point Code:
List of served exchanges: 707-458
List of served ratecenters: CRESCENTCY,CA
List of carriers on switch: VERIZON WEST COAST INC.-CA (2344)
List of other switches in building: [HICHCAXFRS2](#)

Klamath - KLMTCAFRS1

State: CA
English Name: KLAMATH
CLLI: KLMTCAFRS1
Switch Type: NTDMSRSE
Host CLLI (if remote):
Status: ()
LATA: San Francisco CA (722)
Exchanges Served: 1
Building CLLI: KLMTCAFX
Street Address: 16846 SKYWAY DR & USHWY 101
KLAMATH, CA 95548

Map



Lat/Long: 41.55812, -124.05879
V/H: 7688, 9070
Tandem: [CRCYCAFX03T](#)
SS7 Point Code:
List of served exchanges: 707-482
List of served ratecenters: KLAMATH,CA
List of carriers on switch: VERIZON WEST COAST INC.-CA (2344)
List of other switches in building: [KLMTCAFRS1](#)

Smith River - SMRVCAXFDS1

State: CA
English Name: SMITH RIVER
CLLI: SMRVCAXFDS1
Switch Type: NTDMS10
Host CLLI (if remote):
Status: ()
LATA: San Francisco CA (722)
Exchanges Served: 1
Building CLLI: SMRVCAXF
Street Address: 130 N FRED D HAIGHT DR
SMITH RIVER, CA 95567

Map



Lat/Long: 41.92599, -124.14601
V/H: 7607, 9090
Tandem: [CRCYCAXF03T](#)
SS7 Point Code:
List of served exchanges: 707-487
List of served ratecenters: SMITHRIVER,CA
List of carriers on switch: VERIZON WEST COAST INC.-CA (2344)
List of other switches in building: [SMRVCAXFDS1](#)

Orick - ORICCAXFRS1

State: CA
English Name: ORICK
CLLI: ORICCAXFRS1
Switch Type: NTDMSRSE
Host CLLI (if remote):
Status: ()
LATA: San Francisco CA (722)
Exchanges Served: 1
Building CLLI: ORICCAXF
Street Address: 45 BARNUM RD @ WEBSTER ST
ORICK, CA 95555

Map



Lat/Long: 41.28578, -124.06112
V/H: 7748, 9066
Tandem: [CRCYCAXF03T](#)
SS7 Point Code:
List of served exchanges: 707-488
List of served ratecenters: ORICK,CA
List of carriers on switch: VERIZON WEST COAST INC.-CA (2344)
List of other switches in building: [ORICCAXFRS1](#)

CELLCO PARTNERSHIP DBA VERIZON WIRELESS – CA (Verizon Wireless)

Information on EURKCAAM0MD:

State: CA
English Name:
CLLI: EURKCAAM0MD
Switch Type:
Host CLLI (if remote):
Status: ()
LATA: ()
Exchanges Served: 2
Building CLLI: EURKCAAM ([See DSLReports information on this wirecenter](#))
Street Address: ,
Lat/Long: ,
V/H: ,
Tandem:
SS7 Point Code:
List of served exchanges: 707-599 707-951
List of served ratecenters: EUREKA,CA **CRESCENTCY,CA**
List of carriers on switch: CELLCO PARTNERSHIP DBA VERIZON WIRELESS - CA
(6006)
List of other switches in building: [EURKCAAM0MD](#)

Edge Wireless

Information on EURKCAEU0MD:

State: CA
English Name:
CLLI: EURKCAEU0MD
Switch Type:
Host CLLI (if remote):
Status: ()
LATA: San Francisco CA (722)
Exchanges Served: 11
Building CLLI: EURKCAEU
Street Address: 1020 W Del Norte St
Eureka, CA 95501-2116

Map



Lat/Long: 40.79066, -124.17889

V/H: 7858, 9077

Tandem:

SS7 Point Code:

List of served exchanges: 707-218 707-267 707-267 707-267
707-407 707-407 707-407 707-407
707-407 707-672 707-845

List of served ratecenters: **CRESCENTCY,CA EUREKA,CA**

List of carriers on switch: **EDGE WIRELESS, LLC (3874)**

List of other switches in building: [EURKCAEU0MD](#)

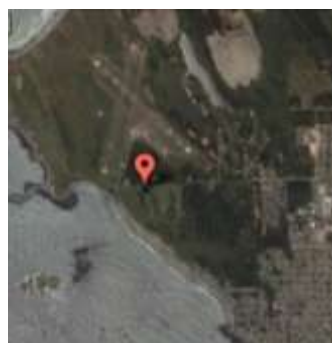
U.S. Cellular

Number of results: 2

Information on CRCYCAA01MD:

State: CA
English Name:
CLLI: CRCYCAA01MD
Switch Type:
Host CLLI (if remote):
Status: ()
LATA: San Francisco CA (722)
Exchanges Served: 2
Building CLLI: CRCYCAA0 ([See DSLReports information on this wirecenter](#))
Street Address: 0.13 MI E/O AIRPORT RD ON WASHINGTON BLVD
CRESCENT CITY, CA 95531

Map



Lat/Long: 41.77140, -124.23488

V/H: 7643, 9102

Tandem:

SS7 Point Code:

List of served exchanges: 707-460 707-954

List of served ratecenters: CRESCENTCY,CA

List of carriers on switch: UNITED STATES CELLULAR CORP. - CALIFORNIA
(6261)

List of other switches in building: [CRCYCAA01MD](#)

Common Language Location Information (CLLI) Codes Technical Description

- How Are CLLI Codes Used?
- How Are CLLI Codes Developed?
- Would a Picture Help?

How Are CLLI Codes Used?

COMMON LANGUAGE Location Codes (CLLI Codes) are used worldwide to identify and describe three types of locations:

- **Network sites:** These include such network locations as central office buildings, business and commercial offices, microwave radio structures and earth stations.
- **Network support sites:** These include such locations as international boundaries or crossing points, end points, fiber nodes, cable and facility junctions, manholes, poles and repeaters.
- **Customers sites:** These include customer locations and associated circuit terminations, facilities or equipment for each specific customer.

How Are CLLI Codes Developed?

Each CLLI code conforms to one of three basic formats (Network Entity, Network Support Site and Customer Site). Each format, in turn, determines how these six coding elements are used:

1. **Geographical Codes**
(Example: DNVR = Denver)

Typically assigned to cities, towns, suburbs, villages, hamlets, military installations and international airports, geographical codes can also be mapped to mountains, bodies of water and satellites in fixed-earth orbit.

2. **Geopolitical Codes**
(Example: CO = Colorado)

Typically assigned to countries, states and provinces, geopolitical and geographical codes can be combined to form a location identifier that is unique worldwide.

3. **Network-Site Codes**
(Example: 56 = A central office on Main Street)

This element is used with geographical and geopolitical codes to represent buildings, structures, enclosures or other locations at which there is a need to identify and describe one or more functional entities.

This category includes central office buildings, business and commercial offices, certain microwave-radio relay buildings and earth stations, universities, hospitals, military bases and other government complexes, garages, sheds and small buildings, phone centers and controlled environmental vaults.

4. **Network-Entity Codes**
(Example: DS0 = A digital switch)

This element can be used with geographical, geopolitical and network-site codes to identify and describe functional categories of equipment, administrative groups or maintenance centers involved in the operations taking place at a given location.

5. **Network Support-Site Codes**
(Example: P1234 = A telephone pole)

This element can be used with geographical and geopolitical codes to identify and describe the location of international boundaries or crossing points, end points, fiber nodes, cable and facility junctions, manholes, poles, radio-equipment sites, repeaters and toll stations.

6. **Customer Site Codes**
(Example: 1A101 = A customer)

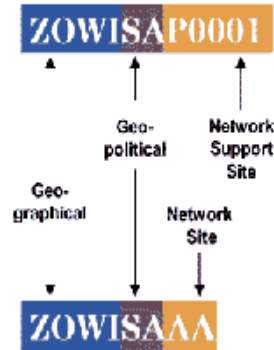
This element can be used with geographical and geopolitical codes to identify and describe customer

locations associated with switched-service networks, centrex installations; trunk forecasting, cable, carrier or fiber terminations, NCTE, CPE and PBX equipment, military installations, shopping malls, universities and hospitals.

Would a Picture Help?

Now let's try a graphical presentation of the same information:

CLLI Code Examples



11-character Network Support Site format for a telephone pole located .5 miles south of HWY 33 & Green Bay Rd. on Zoowie Island, Saskatchewan, Canada

8-character Network Site format for a building located .5 miles south of HWY 33 & Green Bay Rd. on Zoowie Island, Saskatchewan, Canada

http://www.telcordia.com/resources/commonlang/productshowroom/product/cli_tech/index.html, retrieved June 2, 2006